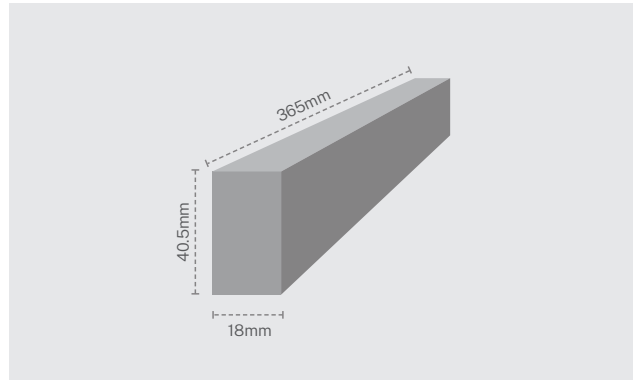
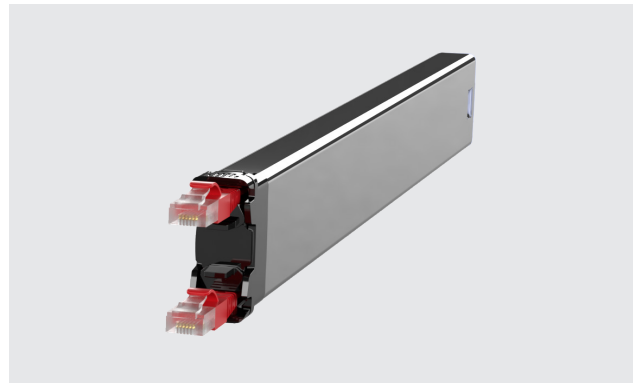


PATCHBOX® 365 Cassettes STP / UTP

The PATCHBOX® is the most modern cabling system for network cabinets. It makes conventional cable guides and patch cables simply look old. Thousands of satisfied customers worldwide rely on this patented innovation to make their IT more efficient, faster and more economical.



Technical Specification

STP Cable

Flat Cat.6a Shielded Twisted Pair, ISO/IEC 11801 Channel Class Ea, 500MHz, AWG36, 100% stranded copper, PVC jacket, PoE (802.3af)

UTP Cable

Flat Cat.6a Unshielded Twisted Pair, ISO/IEC 11801 Channel Class Ea, 500MHz, AWG30, 100% stranded copper, PVC jacket, PoE (802.3af)

Connector

RJ45 shielded plug, pins gold plated, snagless booted

Cable length

0.8m covers 8RU

Cassette Profiles

Stainless steel, laser-welded

Plastic Parts

Polyoxymethylene POM

Operating Temperature Range

-20°C – 60°C

Ambient Humidity Non-Condensing

10% -90%

Gross Weight

0.40kg

Packaging Dimensions

690mm x 50mm x 50mm WxDxH

HS-Code

8544 4210

For Customers in Australia & New Zealand

STP patch cords are compliant with AS/CA S008:2010

A1:2014

Items included

1 x PATCHBOX 365 STP / UTP Cassette with Cat.6a cable

Shielded Twisted Pair (STP) Variants

Product Code	Cable Color
C36STPXC6AAX1K	Black
C36STPXC6AAX1B	Blue
C36STPXC6AAX1G	Green
C36STPXC6AAX1R	Red
C36STPXC6AAX1W	White
C36STPXC6AAX1Y	Yellow
C36STPXC6AAX1GY	Grey

Unshielded Twisted Pair (UTP) Variants

Product Code	Cable Color
C36UTPXC6AAX1K	Black
C36UTPXC6AAX1B	Blue
C36UTPXC6AAX1G	Green
C36UTPXC6AAX1R	Red
C36UTPXC6AAX1W	White
C36UTPXC6AAX1Y	Yellow
C36UTPXC6AAX1V	Violet

