

PATCHBOX® Plus+ Cassettes STP / UTP

The PATCHBOX® is the most modern cabling system for network cabinets. It makes conventional cable guides and patch cables simply look old. Thousands of satisfied customers worldwide rely on this patented innovation to make their IT more efficient, faster and more economical.

Technical Specification

STP Cable

Flat Cat.6a Shielded Twisted Pair, ISO/IEC 11801 Channel Class Ea, 500MHz, AWG36, 100% stranded copper, PVC jacket, PoE (802.3af)

UTP Cable

Flat Cat.6a Unshielded Twisted Pair, ISO/IEC 11801 Channel Class Ea, 500MHz, AWG30, 100% stranded copper, PVC jacket, PoE (802.3af)

Connector

RJ45 shielded plug, pins gold plated, snagless booted

Cable length

1.8m covers 30RU

Cassette Profiles

Stainless steel, laser-welded

Plastic Parts

Polyoxymethylene POM

Operating Temperature Range

-520°C – 60°C

Ambient Humidity Non-Condensing

10% -90%

Gross Weight

0.40kg

Packaging Dimensions

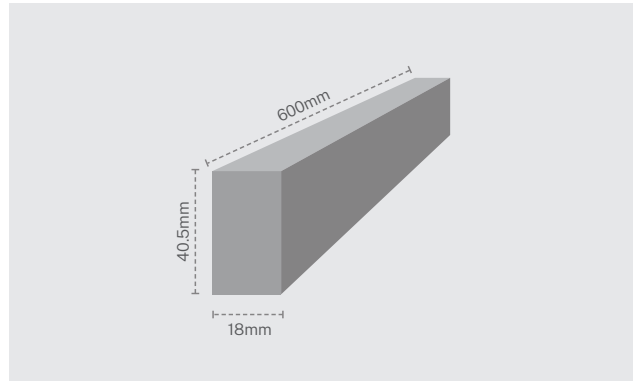
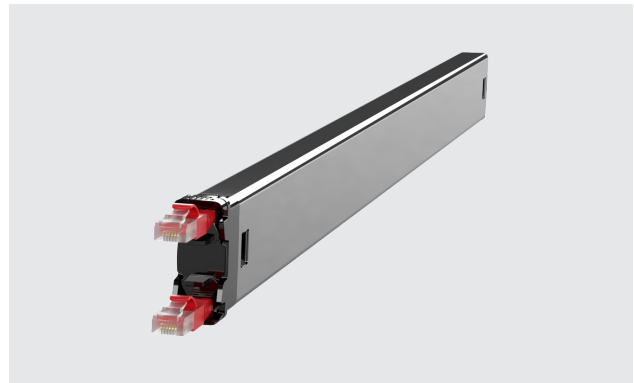
690mm x 50mm x 50mm WxDxH

HS-Code

8544 4210

For Customers in Australia & New Zealand

STP patch cords are compliant with AS/CA S008:2010 A1:2014



Items included

1 x PATCHBOX Plus+ STP / UTP Cassette with Cat.6a cable

Shielded Twisted Pair (STP) Variants

Product Code	Cable Color
C60STPXC6AXX1K	Black
C60STPXC6AXX1B	Blue
C60STPXC6AXX1G	Green
C60STPXC6AXX1R	Red
C60STPXC6AXX1W	White
C60STPXC6AXX1Y	Yellow
C60STPXC6AX1GY	Grey
C60STPXC6AXX1V	Violet

Unshielded Twisted Pair (UTP) Variants

Product Code	Cable Color
C60UTPXC6AXX1K	Black
C60UTPXC6AXX1B	Blue
C60UTPXC6AXX1G	Green
C60UTPXC6AXX1R	Red
C60UTPXC6AXX1W	White
C60UTPXC6AXX1Y	Yellow
P60UTPXC6AX24V	Violet

