

PATCHBOX® Plus+ System STP / UTP

The PATCHBOX® is the most modern cabling system for network cabinets. It makes conventional cable guides and patch cables simply look old. Thousands of satisfied customers worldwide rely on this patented innovation to make their IT more efficient, faster and more economical.

Technical Specification

STP Cable

Flat Cat.6a Shielded Twisted Pair, ISO/IEC 11801 Channel Class Ea, 500MHz, AWG36, 100% stranded copper, PVC jacket, PoE (802.3af)

UTP Cable

Flat Cat.6a Unshielded Twisted Pair, ISO/IEC 11801 Channel Class Ea, 500MHz, AWG30, 100% stranded copper, PVC jacket, PoE (802.3af)

Connector

RJ45 shielded plug, pins gold plated, snagless booted

Cable length

1.8m covers 30RU

Frame

RAL9005 powder coated steel

Cassette Profiles

Stainless steel, laser-welded

Mounting Rails

Stainless steel, variable from 500mm to 850mm

Plastic Parts

Polyoxymethylene POM

Operating Temperature Range

-20°C – 60°C

Ambient Humidity Non-Condensing

10% -90%

Gross Weight

11.86kg

Packaging Dimensions

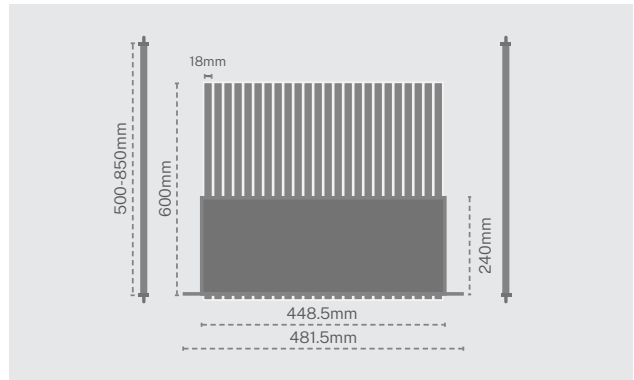
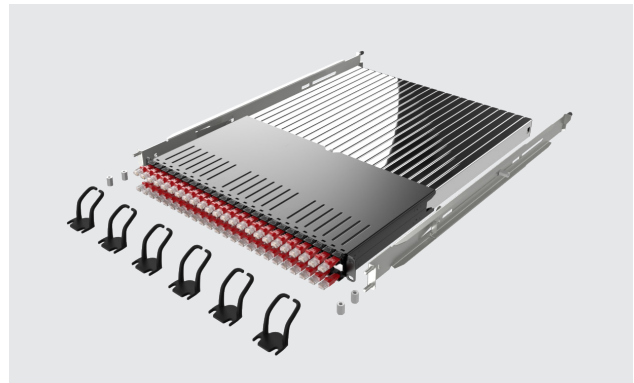
760mm x 590mm x 50mm WxDxH

HS-Code

8544 4210

For Customers in Australia & New Zealand

STP patch cords are compliant with AS/CA S008:2010 A1:2014



Items included

- 24 x PATCHBOX Plus+ STP / UTP Cassette with Cat.6a cable
- 1 x PATCHBOX Plus+ Frame
- 6 x Patchcatch
- 2 x adjustable mounting rails incl. hex nuts
- 2 x DIN A5 tear-off ID Labels (96 Labels)

Shielded Twisted Pair (STP) Variants

Product Code	Cable Color
P60STPXC6AX24K	Black
P60STPXC6AX24B	Blue
P60STPXC6AX24G	Green
P60STPXC6AX24R	Red
P60STPXC6AX24W	White
P60STPXC6AX24Y	Yellow
P60STPXC6A24GY	Grey
P60STPXC6AX24V	Violet

Unshielded Twisted Pair (UTP) Variants

Product Code	Cable Color
P60UTPXC6AX24K	Black
P60UTPXC6AX24B	Blue
P60UTPXC6AX24G	Green
P60UTPXC6AX24R	Red
P60UTPXC6AX24W	White
P60UTPXC6AX24Y	Yellow
P60UTPXC6AX24V	Violet

